

KENWOOD

ProTalk®

Full-Line Catalog

Two-Way Business Radios for Every Profession



NXDN™ **DMR** **FleetSync®**

PacTronics Inc
15375 Barranca Pky H108
Irvine, CA 92618-2209
949-502-5566 949-502-5599 FAX
www.pactronics.com
rhonda@pactronics.com

THE RIGHT RADIO FOR EVERY WORK ENVIRONMENT

ProTalk[®] COMMERCE

Strengthen store security, elevate the customer experience, and significantly boost profits.

ProTalk[®] WORKFORCE

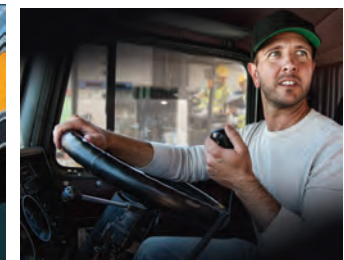
Enhance worker safety and productivity by enabling teams to respond quickly to shifting demands.

PKT-300

- 6-16 channel PKT-300 with 2 Watts of power. More power equals more coverage.
- Excellent voice quality even in noisy environments.
- Super compact and lightweight – clip it to a lanyard, slip it in a pocket.
- Ideal for retail, hospitality, venues and other customer service industries.

NX-P1202AVK/NX-P1302AUK / NX-P1200AVK/P1300AUK NX-P1200NVK/P1300NUK / NX-1200DVK/1300DUK

- Loud, clear, world-renowned KENWOOD audio.
- Designed for manufacturing, warehousing and industrial work places.
- Digital for 20% more coverage (NX-P1200NVK/P1300NUK only).
- Meets tough mil-spec standards. IS models also available (NX-P1200NVK/P1300NUK only).



Healthcare



Multi-Family Housing



Warehouses



Industrial & Commercial Buildings



Security



Hospitality



Retail

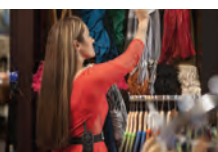
Analog Range and Coverage

VHF & UHF	Steel and/or concrete reinforced buildings	High-rise buildings
UHF 2 Watt	Up to 270,000 sq. ft.	Up to 23 floors
UHF 5 Watt	Up to 450,000 sq. ft.	Up to 42 floors
VHF 2 Watt	Up to 220,000 sq. ft.	Up to 13 floors
VHF 5 Watt	Up to 330,000 sq. ft.	Up to 18 floors

Digital Range and Coverage

VHF & UHF	Steel and/or concrete reinforced buildings	High-rise buildings
UHF 2 Watt	Up to 270,000 sq. ft.	Up to 23 floors
UHF 5 Watt	Up to 550,000 sq. ft.	Up to 50 floors
VHF 2 Watt	Up to 264,000 sq. ft.	Up to 15.6 floors
VHF 5 Watt	Up to 396,000 sq. ft.	Up to 21.6 floors

Talk range will vary based on terrain, conditions and type of radio.



ENHANCED FEATURES IN A COMPACT RADIO



Powerful, and perfect
for busy, high-noise
environments

ProTalk®

▼ PKT-300 2W UHF FM TRANSCEIVER

The PKT-300 portable radio combines a lightweight, compact design with powerful, user-friendly features. Ideal for high-noise environments, it offers 2 watts of transmit power, KENWOOD quality audio, a bright LCD display, and 6-16 channels. Perfect for fast-paced retail, hospitality, warehousing, entertainment and sporting venues with an integrated swivel belt clip and high capacity battery.

- 2 WATTS of Transmit Power
- 6-16 Channels
- 4-Digit 7-Segment LCD with Backlighting
- 4.87 oz extremely lightweight
- KENWOOD Enhanced Audio
- 2200 mAh Lithium-ion Battery with up to 14 hours of talk time *(5-5-90) and 4.5 hour fast charger
- Custom programable option
- Works with other business or commercial radios
- Built-in VOX
- Battery Saver
- Built-in Privacy Talk
- Compander
- 10-Call Alert Tone
- MIL-STD 810 C, D, E, F, G, and H
- 2-Year Warranty

*w/battery saver off



Scan QR Code for more
detailed specifications
and accessories.



Actual Size

DELIVERING PROFESSIONAL PERFORMANCE

ProTalk®

Analog Portable Radios

The NX-P1202AVK/P1302AUK (2W) portable radios offer a valuable investment for reliable on-site communication, while the NX-P1200AVK/P1300AUK (5W) models provide enhanced coverage for more demanding environments.

FleetSync®
by KENWOOD



▼ NX-1202AVK/NX-1302AUK ▼ NX-P1200AVK/NX-P1300AUK 2W/5W VHF/UHF ANALOG PORTABLE RADIOS

- 64 Channels, 2 Watt / 5 Watt
- 27 VHF / 99 UHF Preset Frequencies
- 45 QT / 174 DQT Privacy Codes
- Button Lock / Super Lock
- VOX / Semi-VOX Operation
- 16-code Voice Inversion Scrambler
- Calling Alert / Cloning / Scan
- Removable Antenna
- Voice Announcement
- Time-out Timer
- Battery Saver / Low Battery Warning
- Compander
- Second PTT button
- 2,000 mAh Li-Ion battery with up to 11.5 hours (5W)/15.0 hours (2W) of talk time *(5-5-90) and 3 hours fast charger
- Diecast Chassis / Weather-Sealed Construction
- Weighs only 9.88 oz with Battery
- Meets 11 Mil-Spec Standards
- Compatible with other business radios operating on the same frequency

*w/battery saver off

- SMA Antenna Connector: Different antennas can be attached.



- Selectable 7-Color
A large 7-color LED indicator on the top panel illuminates to signify multi-status functions. (PC programming required.)



Scan QR Code for more detailed specifications and accessories.



DIGITAL OPERATION ENHANCES WORK PLACE EFFICIENCY

ProTalk® DIGITAL

Digital Portable Radios

The NX-P1200NVK and NX-P1300NUK portable radios harness the proven NXDN protocol to enhance coverage or FM analog for simple operations. They allow the combination of analog and digital channels in the same zone. This gives you the ability to easily migrate to digital at your own pace, or operate more effectively in a mixed environment where groups of users have different needs or solutions.

NXDN™ DMR FleetSync®



▼ NX-P1200NVK/NX-P1300NUK ▼ NX-1200DVK/NX-1300DUK(2) 5W VHF/UHF DIGITAL PORTABLE RADIOS

- 64 Channels, 5 Watt
- 27 VHF / 99 UHF Preset Frequencies
- 45 QT / 174 DQT / 63 (RAN) Privacy Codes
- Second PTT button
- Button Lock / Super Lock
- VOX / Semi-VOX Operation
- 16-code Voice Inversion Scrambler
- NXDN Digital 15 bit encryption
- Removable Antenna
- Voice Announcement
- Time-out Timer
- Voice Announcement
- Analog and/or digital capable
- Programable button for one-on-one conversations, group call or it can be used as an emergency button (Requires upgrade)
- Battery Saver / Low Battery Warning
- Mixed Zone - analog and digital
- Calling Alert / Cloning / Scan
- Kenwood renowned audio
- 1 watt of loud robust audio to hear in noisy environments
- Lone Worker
- Stun / Kill / Revive (Requires upgrade)
- Compander
- 2,000 mAh Li-Ion battery with up to 11.5 hours (5W)/15.0 hours (2W) of talk time *(5-5-90) and 3 hours fast charger
- Diecast Chassis / Weather-Sealed Construction
- Weighs only 9.88 oz with Battery
- Meets 11 Mil-Spec Standards
- Compatible with other business radios operating on the same frequency

**w/battery saver off*



Scan QR Code for more detailed specifications and accessories.

INTRINSICALLY SAFE OPTION

▼ NX-P1200ISNVK/NX-P1300ISNUK

The NX-P1200NVK/P1300NUK portables offer an Intrinsically Safe Option approved for Class I, Div. 1, Group D and are also approved for non-Incendive use in Class I, Div. 2, Groups A, B, C, D hazardous locations.



ACCESSORIZE

PKT-300 Accessories

KNB-45L

(3.6V/2,200mAh
Li-ion Battery Pack
(Same as supplied))



KSC-50K

Single Unit Charger
(Same as supplied)



Intrinsically Safe

KSC-44MLKS

AC Adapter (For KSC-50CR)
Multi-Unit use, up to 6 units)



KSC-506K

One Piece 6-Unit Charger



KMC-45D

Speaker Microphone
(IP54/55)



KHS-8BL / 9BL

2 & 3 wire Palm Microphone
w/Earphone



KHS-27A

D-Ring Ear Hanger
w/PTT & Mic



KEP-2

2.5mm earphone kit for
KMC-45D Speaker Mic



KBH-21

Belt Clip
(Long 1.91in / 50mm)



KBH-23K

Swivel Belt Clip Holster



All accessories and options may not be available in all markets.
Contact an authorized KENWOOD dealer for details and complete list of all accessories and options.

NX-1000 Series Portable Accessories

KNB-45L

2,000mAh/7.4V
Li-ion Battery Pack



KNB-82LCM

1,900mAh/7.4V
Li-ion Battery Pack



Intrinsically Safe

KSC-35SK

Fast Charger
For the KNB-45L/69L 82LCM
(3-Hour)



KSC-43K

Dual Chemistry Fast Charger
For the KNB-45L/69L/82LCM



KMB-28AK

Six Unit Charger Adapter
(for six KSC-35SK Chargers)



KVC-22

DC Vehicular
Charger Adapter



KRA-22/23

VHF/UHF Helical
Antenna (Low Profile)



KRA-26/27

VHF Helical Antenna
UHF Whip Antenna
(Standard Length)



KMC-21A

Compact Speaker
Microphone



KMC-45D

Speaker Microphone
(IP54/55)



KHS-26

Headset (with Ear Bud
In-Line PTT)



KHS-26/31C

C-Ring PTT Ear Hanger
Headset



KHS-27A

D-Ring In-line
PTT Headset



KHS-10D-OH

Over-the-Head Headset with
Noise-Canceling Boom Mic



KBH-10

Belt Clip



All accessories and options may not be available in all markets.
Contact an authorized KENWOOD dealer for details and complete list of all accessories and options.

PROVIDING ESSENTIAL COMMUNICATIONS FOR MULTIPLE WORK ENVIRONMENTS

Radios That Meet Every Work Requirement

The NX-P1000 Series is designed to be a versatile, durable radio that fulfills the need for essential communications in many business settings.

Customize at Will

The NX-P1000 Series supports FM Analog and NXDN digital operation, enabling a migration to digital at your pace.

FM Analog

FM analog protocol is offered in *25 kHz and narrow 12.5 kHz channel spacing, as well as conventional operation with QT/DQT and FleetSync signalling protocol.

NXDN Digital Protocol

NXDN supports both channel bandwidths of 12.5 kHz and 6.25 kHz bandwidth using FDMA technology. NXDN provides excellent spectrum efficiency, wide coverage and scalability.

DMR Digital Protocol

Ability to upgrade from ProTalk analog to DMR Tier 2 when you're ready. DMR offers two talk paths within a 12.5 kHz bandwidth, effectively doubling the capacity for a single license and/or repeater.

* Some limitations apply in certain regions when configuring wide channel spacing.



Simple Yet Tough

Tough, Robust & Water Resistant

The NX-P1000 series radios go through stringent tests including drop, immersion, splash, key punch, extreme temperature, dust, and heavy rain to simulate the harshest operating conditions experienced in a variety of applications – both with and without the KMC-45 optional speaker microphone. The NX-P1000 series radios also meet the international ingress protection standards, including *IP54, IP55 and also meet the MIL-STD 810 C to G standards set by the U.S. Department of Defense.

*Accessory connectors must be covered.

Enhanced Audio Quality

Based on Kenwood's many years of experience with professional and high quality audio products, the NX-P1000 can be customized to deliver the best digital audio to business radio users with various language backgrounds.

Clear and Confident

Voice announcements will keep you informed of a newly selected zone/channel, function and when a PTT button is pressed, as well as reception status.

Cloning

Customize the radio programming one time and use the optional cloning cable to rapidly program groups of ProTalk radios with the same settings.



SOUND PERFORMANCE FOR SMOOTH OPERATION

▼ NX-1700H/1800H VHF/UHF TRANSCEIVERS

The NX-1700H/1800H mobile radio supports multiple protocols including NXDN and DMR as well as mixed digital & FM analog operation. It is packed with all the features essential for most enterprise and operation-critical applications. It's also equipped with optimizable TX/RX audio quality, and a customizable front panel that prioritizes simple convenience. Operational status is clear at a glance from the white backlit LCD display and 7-color LED indicator.



Scan QR Code for more detailed specifications and accessories.



▼ KAS-20

AVL & DISPATCH SOFTWARE STANDALONE & MULTI-CLIENT OPERATION

The KAS-20 Software provides AVL and Dispatch capability compatible with Kenwood digital radio systems. With the capability to run under Windows and Windows Server operating systems, it provides a cost effective package for AVL and dispatch for business, supporting both the NXDN and DMR digital protocols.



Mobile Accessories

KMC-9C
Desktop Microphone
(non TDMA)



KES-8K
External Speaker



KMB-10
Key Lock Adapter



KMC-59C
Desktop
Microphone



KCT-18
Ignition Sense Cable
(Requires KCT-60)



KPS-15
DC Power Supply
(23A max)



KMC-65M
Microphone
[IP54/55] Pack



KCT-23
DC Power Cable



KMB-34
Mounting Case for KPS-15



KMC-66M
12-Keypad Microphone
[IP54/55]



KCT-60
Connection cable (D-sub 15
to Molex 15 pin connector)



GPS15XL-W
GPS Receiver Board



KES-5A
External Speaker
(Requires KCT-60)



KLF-2
Line Filter



GA25MCX
GPS Antenna
for GPS15XL-W



MULTI-MODE, SPACE SAVING SOLUTION

ProTalk[®] DIGITAL Repeaters

The KENWOOD NXR-1700/1800 repeater continues a tradition of migration friendly and innovative infrastructure to offer the ultimate in modern scalability and security for analog, NXDN and DMR two-way systems. Plus it now has a new, compact design. Whether you are managing a single repeater, a wide area multi-site system or are managing multiple systems remotely, the NXR-1700/1800 gives your operation versatile, digital system capabilities.



▼ NXR-1700E/1800E/1800E2 VHF/UHF ANALOG & DIGITAL REPEATER

- VHF 136-174 50 – 1 W RF Output Power (Up to 50 W @ 50%, 25 W @ 100% Duty Cycle)
- UHF 400-470 40-1W RF Output Power (up to 40W @ 50%, 25W @ 100% Duty Cycle)
- UHF 450-520 40-1W RF Output Power (up to 40W @ 50%, 25W @ 100% Duty Cycle)
- 1.71-inch OLED with Icons and Numeric Displays
- Up to 32 Channels
- Selectable Digital Protocol: DMR Tier II / NXDN Conventional (programmable one at a time)
- Built-in IP Network Adapter
- Unicast and Multicast Call Routing
- SNMP Protocol for Network Management
- IP Remote Management (Monitor / Control / Programming / Test Console)
- IP Networking Compatible with NXR-5000 (NXDN), legacy KTI-3 (NXDN) and KTI-5 (DMR)



Scan QR Code for more detailed specifications and accessories.



Supplied Accessories

- DC Power Cable
- Single mounting bracket
- Dual mounting bracket
- Rack handles



Example of rack mount option

WE HAVE THE ANSWERS



Answers to some of the most frequently asked questions.

Can a VHF radio talk to a UHF radio?

No, the VHF and UHF frequency bands are not compatible.

Is an FCC license required?

Yes, an FCC license is required. You can download FCC form 601 and instructions at www.fcc.gov/formpage.html or call 1-888-call-fcc. Your authorized KENWOOD dealer or distributor can assist you with FCC licensing.

Why are KENWOOD radios so durable and rugged?

KENWOOD knows that radios have to be built tough enough to withstand years of hard indoor and outdoor use. ProTalk radios are designed to meet or exceed rigorous Mil-Spec standards established by the U.S. Department of Defense.

How do I know which KENWOOD radio to use?

Determine how the radio will be used UHF is better indoors through concrete walls or floors, etc. VHF is better outdoors through foliage or line of sight. Also, higher power means a radio will have a wider coverage area.

Are KENWOOD radios compatible with other business radios?

Yes, all you have to do is match the frequency, code, and communication style (analog/digital).

How long will the KENWOOD battery last and how long does it take to recharge?

Charging Time	Li-Ion Battery Rating	Li-Ion Battery Life	Radio Weight Including Battery
PKT-300			
4.5hrs	2,200 mAh	14/18 hrs	4.87oz
NX-P1200AVK / NX-P1300AUK / NX-P1200NVK / NX-P1300NUK			
3hrs	2,000 mAh	11.5/12.5 hrs	9.88oz
NX-P1202AVK / NX-P1302AUK			
3hrs	2,000 mAh	15/16.5 hrs	9.88oz

Battery Save Function Off / Battery Save Function On

Return on Investment

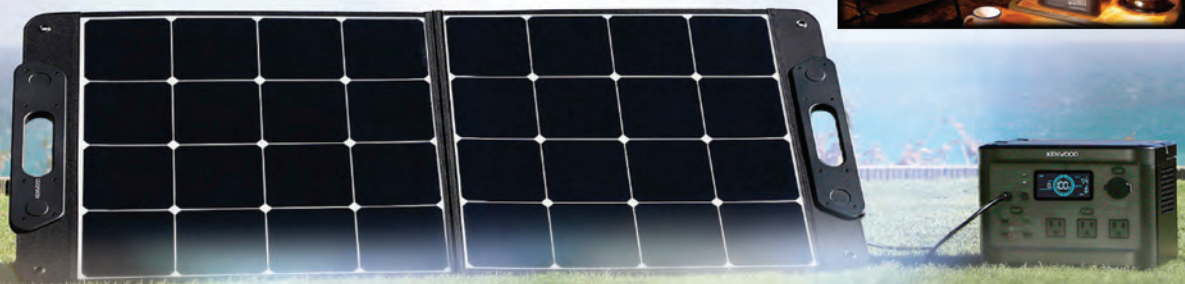
KENWOOD ProTalk radios rapidly pay for themselves.

Hourly Wage (with benefits)	7 minutes per hour savings per worker = 56 Minutes per day	Annual savings for a 12 person staff
\$12.00	\$2,688 Per Year	\$32,256
\$15.00	\$3,360 Per Year	\$40,320
\$18.00	\$4,033 Per Year	\$48,396

RELIABLE POWER, READY WHEN YOU ARE

Portable Power Station

The LiFePO4 lithium iron phosphate battery is designed to deliver optimal performance with advanced features that ensure longevity and reliability. The "Automatic Power Supply System" protects against battery degradation and malfunctions, while the fast 1.5-hour charging capability eliminates the need for a bulky AC adapter. With a comprehensive battery management system controlling voltage, current, and temperature, and a sine wave inverter that prevents equipment damage while suppressing noise and vibration, this system is built to meet demanding conditions with precision and care.



▼ **BN-RK510** 600W OUTPUT, 512Wh CAPACITY

- Input: (AC) 120V AC 60 Hz 1109W / (DC) 12V-28V DC 240W
- Output: 3 ports 120V AC 5A 60Hz total 600W (max 1200W instant) USB-A: 3 ports of Qualcomm® Quick Charge™ 3.0 5V-6V DC 3A / 6V-9V DC 2A / 9V-12V DC 1.5A USB-C: 1 port 5V DC 3A / 9V DC 3A / 12V DC 3A / 15V DC 3A / 20V DC 5A 1 port of car output 12V DC 120W
- Battery capacity: 512Wh 160,000mAh
- Charging temperature: 32°F-104°F (0°C-40°C)
- Operating temperature: 14°F-104°F (-10°C-40°C)
- Foldable handle with non-slip rubber coating
- Informative, bright LCD screen
- Toggleable LED light built-in



Power On Demand

Everyday convenience, emergency assurance – Dependable portable power

PORTABLE POWER STATION

Why KENWOOD Portable Power Station?

Trust

KENWOOD has been providing high-quality, cutting-edge products for over three-quarters of a century, earning the trust of sales, customers, and partners around the world.

KENWOOD

Reliability

Engineered to excel in tough environments, KENWOOD products are built to meet stringent design and quality standards with extensive durability and safety tests.

KENWOOD aims to remain an industry leader in technology and consistently deliver top-tier products with advanced design and outstanding performance.

Advanced Technology

About KENWOOD logo: The iconic white letters and red triangle on a black background symbolize technology and quality, offering users a reliable source of energy and peace of mind.



Scan QR Code for more detailed specifications.

6 Reasons to Choose ANALOG Two-Way Radios

Two-way analog radio is a reliable choice for most users. Here are some of the key benefits:

AFFORDABLE: Because the technology is not software-enhanced, it is simpler and affordable.

BASIC ENCRYPTION: Basic encryption means users still have secure channels.

EASE OF USE: It is simple to use and since little training is needed, users can get up and running quickly.

NATURAL VOICE: It is a popular choice with some users as it offers natural voice communications.

SIMPLE, BUT RELIABLE: It can be a reliable option for organizations with relatively simple communication needs and a limited geographic footprint.

TIME TESTED: Analog radio technology has been used across many industries.

6 Reasons to Choose DIGITAL Two-Way Radios

Software-based digital two-way radios have enhanced data-rich features:

ADVANCED ENCRYPTION: Advanced encryption means more options for secure communications.

VOICE QUALITY: Digital radios block background noise and deliver improved voice quality, expanded coverage, and no degradation in voice quality over distances.

DIGITAL FEATURES: These include much higher GPS throughput, IP data, OTAP data, large databases of group and unit IDs that allow for more efficient system usage.

ERROR-CORRECT FEATURE: Voice signals are rebuilt if a signal gets corrupted because of interference.

MULTIPLE COMMUNICATIONS ON ONE CHANNEL FOR GREATER EFFICIENCY: Several users can communicate over a single channel.

IMPROVED COVERAGE AND IN-BUILDING PENETRATION: Enhanced radio signals ensure reliable communication across wider areas and better penetration through structures.

JVCKENWOOD USA Corporation
Safety & Security Sector Headquarters
1440 Corporate Drive | Irving, TX 75038

Order Administration/Distribution
4001 Worsham Ave. | Long Beach, CA 90808

www.kenwood.com/usa

ProTalk®

Two-Way Business Radios for Every Profession



ISO9001 Registered
Communications Systems Division
JVCKENWOOD Corporation

AD5#08024 Printed in USA